



# AWM

Adaptive Wireless Monitor



Nuclear  
Power



Homeland  
Security  
& Defense



Industrial and  
Manufacturing



Healthcare



Labs and  
Education

## OVERVIEW

The Adaptive Wireless Monitor (AWM) is a dynamic new wireless remote monitor system that now represents an ALL-in-ONE solution for nuclear industry remote monitoring. This compact system can be deployed as a base station, MESH repeater, external transmitter device, active dive repeater, etc.; which minimizes the different types of inventory that must be maintained. The AWM includes a DB9 RS-232 communication port, USB communication port, Power-over-Ethernet (POE) or Wi-Fi. The AWM uses a colored touchscreen for on-screen defined configurations.

## KEY FEATURES

- Adaptable to interface with a wide range of radiation monitors and other measuring devices
- WRM2, Wi-Fi, Blue-tooth, and GPS capability
- Touch-screen user interface allows configuration in the field
- Power-over-Ethernet
- >8 hour batter backup

Health Physics Division

## MECHANICAL CHARACTERISTICS

- Display: On-screen configuration
- Dimensions: 7.1 x 4.1 x 2.25 in (180 x 104 x 57 mm)
- Weight: 32 oz

## OPERATING CHARACTERISTICS

- WRM2, Wi-Fi, Blue-tooth, and GPS capable
- Power-over-Ethernet
- WRM2 Radio 900 MHz or 2.4 GHz frequency
- Communication Ports:
  - (1) DB9 Serial (RS 232)
  - (1) Micro-USB
  - (1) Power-over-Ethernet (POE)

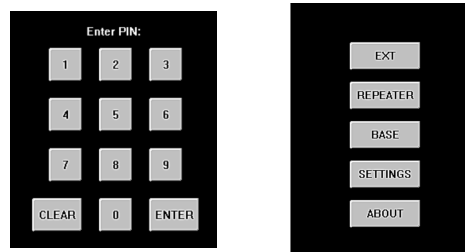
## ELECTRICAL CHARACTERISTICS

### Power Options:

- 9V – 24V external power adapter
- Power Over Ethernet (POE) power (48V – 57V), POE 802.3af conformance, 0.5W typical
- USB power
- Internal 6Ah Lithium-Polymer (LiPo) battery pack (>8hr backup life)

## ENVIRONMENTAL CHARACTERISTICS

- Ingress Protection: IP67
- Rugged aluminum enclosure
- Operating Temperature range: -13F to +131F (-25C to +60C)
- Storage Temperature range: -40F to +158F (-40C to +70C)
- Relative humidity: up to 85% at 95F (35C)



### > GERMANY - HAMBURG

T: +49 40 85193 0 | E: info-de@mirion.com

### > USA - SMYRNA, GEORGIA

T: +1 770 432 2744 | E: info-us@mirion.com

### > FRANCE - LAMANON

T: 1234567890 | E: info-fr@mirion.com

### > FINLAND - TURKU

T: +358 2 4684 600 | E: info-fi@mirion.com

### > CHINA - SHANGHAI

T: +86 21 6180 6920 | E: info-cn@mirion.com

Copyright (c) 2015 Mirion Technologies, Inc. or its affiliates. All rights reserved. Mirion, the Mirion logo, and other trade names of Mirion Technologies, Inc. or its affiliates in the United States and other countries. Third party trademarks mentioned are the property of their respective owners.