

# TRACS™/Genie-FieldPro™

## In-situ Sample Analysis Solutions

A complete and scalable ultra-portable sample counting solution for use outside of the laboratory.

Ranging from a **single, stand-alone counter** to a **fleet of counters with remote expert data review capability**, the TRACS/Genie-FieldPro solution can be easily sized to fit your needs.

### 1 TRACS – Transportable Radiation Analysis Counting System is easy to transport and use

#### Features:

- 9 main shield components no heavier than 9 kg (20 lb) each
- Set of travel cases available for shipping or easy loading/unloading the cart to/from a car
- Assembly in less than 10 minutes without any tools
- Minimum of 12.7 mm (0.5 in) stainless steel shielding around sample
- Includes Osprey® Digital Tubebase
- Designed for use with a variety of standard or temperature-stabilized 2x2" and 1.5x1.5" scintillation detectors
- Accommodates a 500 ml Marinelli beaker or container size of 11.4 cm (4.5in) dia. x 9.2 cm (3.6 in) high
- Includes liner for easy cleanup
- Camera to verify sample type
- GPS to document measurement location



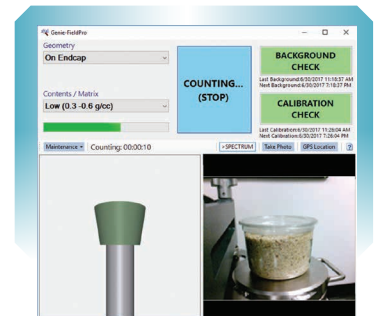
# TRACS

TRACS – Transportable Radiation Analysis Counting System

### 2 Genie-FieldPro – Genie™ 2000 software for automated & simplified data acquisition

#### Features:

- Provides simple, button-driven operation of the sample counting/analysis process
- Utilizes Genie 2000 Basic Spec and Gamma Analysis packages
- Based on configurable limits, reports whether sample is “Clean” or “Above Limit”
- Combines input from GPS and sample camera with analysis results
- Enforces scheduled background and calibration checks, which can be executed with one click
- Preloaded with representative efficiency calibration data for typical geometries
- Display toggles between spectral display and sample image
- Included with TRACS System or can be used with just a computer, Osprey Digital Tubebase & compatible detector



Genie 2000 FieldPro Software

[www.mirion.com](http://www.mirion.com)

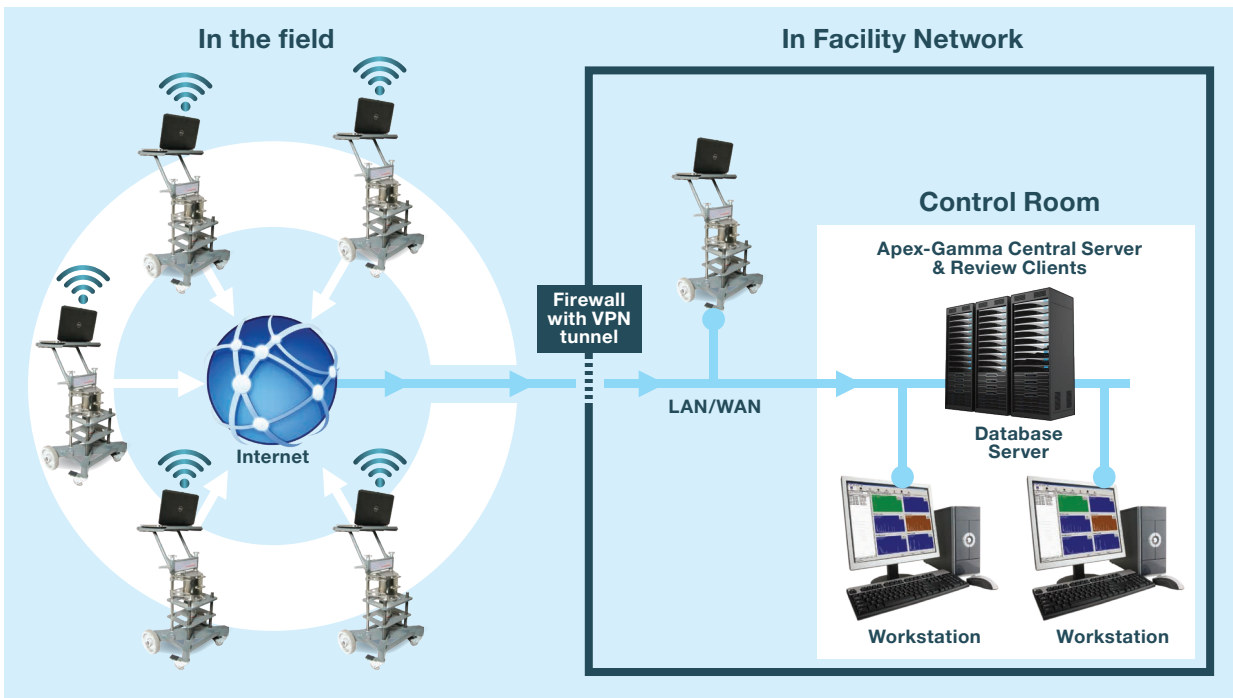


**MIRION**  
TECHNOLOGIES

### 3 Apex-Gamma™ – Lab Productivity Software for expert data review and archiving

**Features:**

- Allows centralized data expert to review, approve and/or reanalyze all data collected in the field
- Data can be archived or transferred to LIMS for reporting and easy retrieval at a later date
- Genie-FieldPro includes a utility to manage the transfer of data files into Apex-Gamma via local network or Internet
- Apex-Gamma Desktop can be used for a single reviewer, or Client/Server can be used if multiple review stations are needed



*Service engineers are available to assist with system set-up and geometry creation/verification for additional sample containers.*

[www.mirion.com](http://www.mirion.com)



**MIRION**  
TECHNOLOGIES